

# Florida CHARTS Tutorial

## Profile Reports

---

DIVISION OF PUBLIC HEALTH STATISTICS AND  
PERFORMANCE MANAGEMENT  
BUREAU OF COMMUNITY HEALTH ASSESSMENT



# Profile Reports

Just one click - a collection of data about a topic!



FLORIDA CHARTS		Glades County, Florida				
		Pregnancy and Young Child Profile				
Measure	Rate Type	Year(s)	County Quartile 1=most favorable 4=least favorable	County Number (Average)	County Rate	State Comparison
<b>Pre-conception Health and Behaviors</b>						
<a href="#">Females &gt; 17 who engage in heavy or binge drinking</a>	Percent of females > 17	2013	1		4.3%	12.2%
<a href="#">Women 15-34 with sexually transmitted diseases<sup>2</sup></a>	Per 100,000 females 15-34	2014	1	22	1885.2	2574.
<a href="#">Females &gt; 17 who are current smokers</a>	Percent of females > 17	2013	1		9.6%	14.4%
<a href="#">Births to underweight mothers at time pregnancy occurred<sup>3</sup></a>	Percent of births	2012-14	2	6	9.8%	11.1%
<a href="#">Births to overweight mothers at time pregnancy occurred<sup>4</sup></a>	Percent of births	2012-14	4	17	26.8%	24.0%
<a href="#">Births to obese mothers at time pregnancy occurred<sup>5</sup></a>	Percent of births	2012-14	4	22	34.5%	21.1%
<a href="#">Births with inter-pregnancy interval &lt; 18 months</a>	Percent of births	2012-14	2	13	34.5%	34.7%
<b>Pregnancy and Health Behaviors</b>						
<a href="#">Births to mothers who report smoking during pregnancy</a>	Percent of births	2012-14	1	4	6.7%	6.5%
<b>Access to Services</b>						
<a href="#">Well Women/Pre-conception care</a>						

Experts selected the content

Usually include data from multiple agencies

Shows county and state data

Presents quartiles for comparison



# Quartiles: a comparison tool

*What is it?*

A number from 1-4

Calculated by ordering rates from most to least favorable and dividing the list into four groups.

*Benefits*

For a single indicator, compare county data to other counties’.

Across several indicators, view county’s strengths (1st quartile) and opportunities (4th quartile).

*Weaknesses*

Quartiles don’t differentiate whether most counties have similar or widely different rates.

1<sup>st</sup> quartile  
Most favorable

2nd quartile

3rd quartile

4th quartile  
Least favorable

County	Rate (%)
Miami-Dade	0.6
Broward	1.7
Palm Beach	2.6
Orange	2.8
Collier	3
Osceola	3.3
Leon	4.5
Hillsborough	5
Seminole	5.1
Gadsden	5.4
Hardee	6
Manatee	6.3
Glades	6.7
Hendry	6.7
Martin	6.9
Jefferson	7.2
Duval	7.3
Alachua	7.3
St. Lucie	7.5
St. Johns	8.1
Lee	8.7
Falk	8.9
Wakulla	8.9
Indian River	9.4
Madison	9.6
Manatee	9.8
Sarasota	9.9
De Soto	10.1
Escambia	10.3
Lake	10.6
Pinellas	10.8
Highland	10.9
Flagler	11.3
Santa Rosa	11.4
Clay	11.8
Valusia	12.4
Okeechobee	12.5
Okaloosa	12.6
Hamilton	13.1
Liberty	13.4
Taylor	13.4
Nassau	13.4
Broward	14.3
Marion	14.3
Parola	14.5
Sumter	15.9
Baker	16
Bay	16
Charlotte	16.1
Walton	16.4
Suwannee	16.5
Jackson	16.5
Hernando	17.2
Gilchrist	17.7
Lafayette	17.9
Washington	18.5
Columbia	18.6
Gulf	19
Franklin	19
Levy	19.8
Calhoun	20.2
Putnam	20.5
Union	23.3
Bradford	23.3
Citrus	24.1
Walton	24.3
Dade	27.4

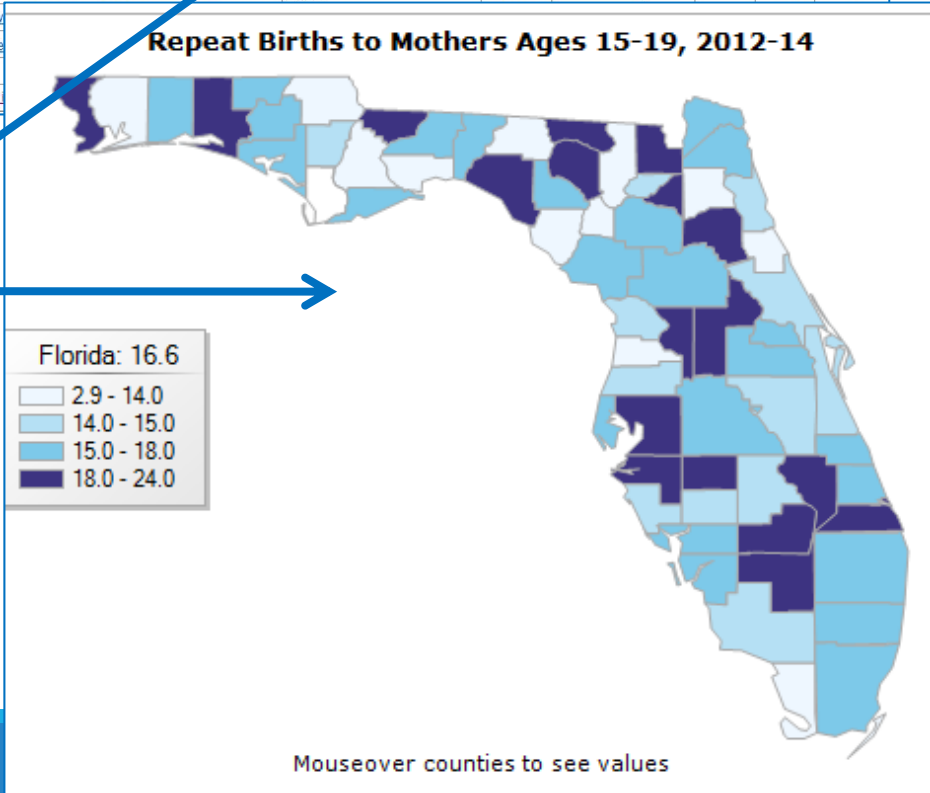
# CHARTS Quartiles

## Shown on Reports and Maps

- LOW QUARTILE NUMBERS REPRESENT FAVORABLE HEALTH SITUATIONS – GREEN OR LIGHT COLORED ON THE MAP.
- HIGH QUARTILE NUMBERS REPRESENT LESS FAVORABLE SITUATIONS – RED OR DARK COLORED ON THE MAP.
- WHAT IF NO QUARTILE IS SHOWN?
  - not enough data is available to calculate them
  - OR
  - quartile calculation is not appropriate (i.e. population counts).

CHARTS		Pregnancy and Young Child Profile		County Quartile	County Number (Average)	County Rate	State Comparison
Measure	Rate Type	Year(s)	1=most favorable 4=least favorable				
<b>Pre-conception Health and Behaviors</b>							
Females > 17 who engage in heavy or binge drinking	Percent of females > 17	2013	1		4.3%	12.2%	
Women 15-34 with sexually transmitted diseases <sup>2</sup>	Per 100,000 females 15-34	2014	1	22	1885.2	2574.6	
Females > 17 who are current smokers	Percent of females > 17	2013	1		9.6%	14.4%	
Births to underweight mothers at time pregnancy occurred <sup>2</sup>	Percent of births	2012-14	2	6	9.8%	11.1%	
Births to overweight mothers at time pregnancy occurred <sup>4</sup>	Percent of births	2012-14	4	17	26.8%	24.0%	
Births to obese mothers at time pregnancy occurred <sup>5</sup>	Percent of births	2012-14	4	22	34.5%	21.1%	
Births with inter-pregnancy interval < 18 months	Percent of births	2012-14	2	13	34.5%	34.7%	
<b>Pregnancy and Health Behaviors</b>							
Births to mothers who report smoking during pregnancy	Percent of births	2012-14	1	4	6.7%	6.5%	
<b>Access to Services</b>							
<b>Well-Woman/Pre-conception care</b>							
Females > 17 with pap smear in preceding year	Percent of females > 17	2013	4		43.3%	51.4%	
Females > 17 who have a personal doctor	Percent of females > 17	2013	4		72.5%	78.4%	
Females > 17 who have any type of health care insurance coverage	Percent of females > 17	2013	1		68.3%	79.6%	
<b>Pregnancy</b>							
Births with 1st trimester prenatal care	Percent of births w/ known PNC status	2012-14	4	44	71.4%	79.8%	
Births with late or no prenatal care	Percent of births w/ known PNC status	2012-14	4	5	8.6%	5.0%	
Births with adequate prenatal care (Kotelchuck index)	Percent of births w/ known PNC status	2012-14	4	39	62.7%	69.7%	
Births to uninsured women							
Births covered by Medicaid							
C-section births							
Very low birthweight							

Examples



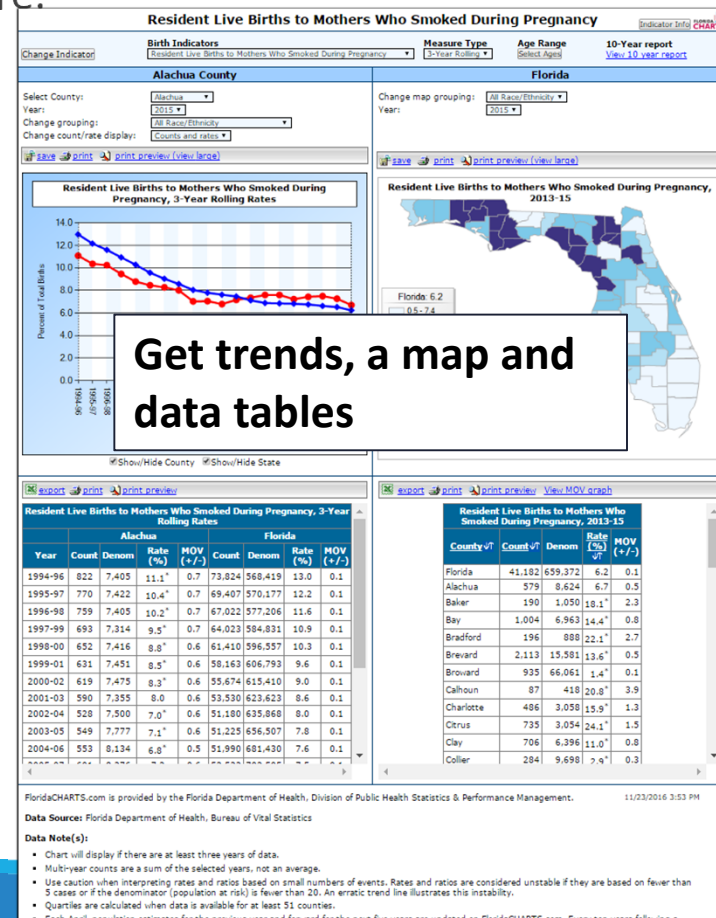
# What can I do with a profile report?

Click links to see more!

Each link takes you to more detail about the measure.

FLORIDA CHARTS						
Glades County, Florida						
Pregnancy and Young Child Profile						
Measure	Rate Type	Year(s)	County Quartile 1=most favorable 4=least favorable	County Number (Average)	County Rate Comparison	State
<b>Pre-conception Health and Behaviors</b>						
<a href="#">Females &gt; 17 who engage in heavy or binge drinking</a>	Percent of females > 17	2013	1		4.3%	12.2%
<a href="#">Women 15-34 with sexually transmitted diseases<sup>2</sup></a>	Per 100,000 females 15-34	2014	1	22	1885.2	2574.6
<a href="#">Females &gt; 17 who are current smokers</a>	Percent of females > 17	2013	1		9.6%	14.4%
<a href="#">Births to underweight mothers at time pregnancy occurred<sup>4</sup></a>	Percent of births	2012-14	2	6	9.8%	11.1%
<a href="#">Births to overweight mothers at time pregnancy occurred<sup>4</sup></a>	Percent of births	2012-14	4	17	26.8%	24.0%
<a href="#">Births to obese mothers at time pregnancy occurred<sup>4</sup></a>	Percent of births	2012-14	4	22	34.5%	21.1%
<a href="#">Births with inter-pregnancy interval &lt; 18 months</a>	Percent of births	2012-14	2	13	34.5%	34.7%
<b>Pregnancy and Health Behaviors</b>						
<a href="#">Births to mothers who report smoking during pregnancy</a>	Percent of births	2012-14	1	4	6.7%	6.5%
<b>Access to Services</b>						
<b>Well-Woman/Pre-conception care</b>						
<a href="#">Females &gt; 17 with pap smear in preceding year</a>	Percent of females > 17	2013	4		43.3%	51.4%
<a href="#">Females &gt; 17 who have a personal doctor</a>	Percent of females > 17	2013	4		72.5%	78.4%
<a href="#">Females &gt; 17 who have any type of health care insurance coverage</a>	Percent of females > 17	2013	1		68.3%	70.9%
<b>Pregnancy</b>						
<a href="#">Births with 1st trimester prenatal care</a>	Percent of births w/ known PNC status	2012-14	4	44	71.4%	79.8%
<a href="#">Births with late or no prenatal care</a>	Percent of births w/ known PNC status	2012-14	4	5	8.6%	5.0%
<a href="#">Births with adequate prenatal care (Kotelchuck index)</a>	Percent of births w/ known PNC status	2012-14	4	39	62.7%	69.7%
<a href="#">Births to uninsured women "self-pay" checked on birth certificate</a>	Percent of births	2012-14	4	5	7.7%	7.1%
<a href="#">Births covered by Medicaid<sup>4</sup></a>	Percent of births	2012-14	3	41	62.9%	50.9%
<a href="#">Pre-natal care</a>	Percent of births	2012-14	3	22	34.0%	37.7%
<a href="#">Very low birthweight infants born in subspecialty perinatal centers</a>	Percent of VLBW births	2012-14	1	-2	100.0%	78.3%

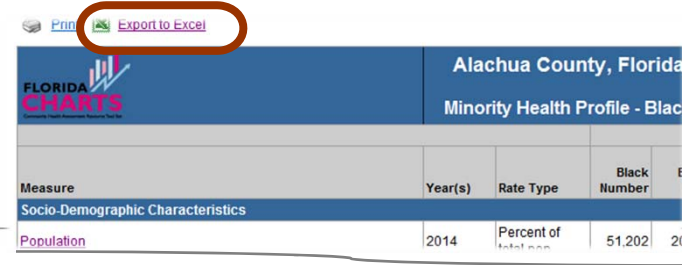
"Births to mothers who smoked during pregnancy"



# What else can I do with a profile report?

Export to excel

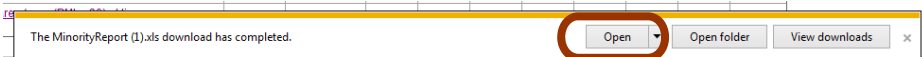
1. Click Export to Excel



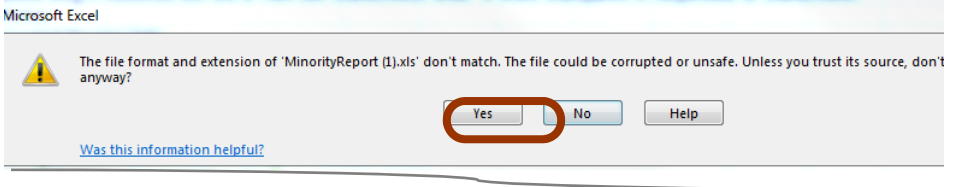
2. Click SAVE at the bottom of the page



3. Click **OPEN** at the bottom of the page



4. Click YES to open the file



5. Now use your Excel file!

A screenshot of the Microsoft Excel spreadsheet showing the full data table. The table has the following structure:

Measure	Year(s)	Rate Type	COUNTY			STATE				
			Black Number	Black Rate	White Number	White Rate	Blk/Wht Rate Ratio	Blk/Wht Rate Ratio		
Population	2014	Percent of total pop.	51,202	20.40%	178,081	71.00%	n/a	16.70%	78.20%	n/a
Population under 18 Years Old	2014	Percent of pop. under 18	14,391	28.00%	31,190	60.70%	n/a	22.10%	70.60%	n/a
Population 18-64 Years Old	2014	Percent of pop. 18-64	32,434	19.30%	120,966	72.10%	n/a	17.20%	77.60%	n/a
Population 65 and Over	2014	Percent of pop. 65+	4,377	13.90%	25,925	82.60%	n/a	8.90%	88.70%	n/a

